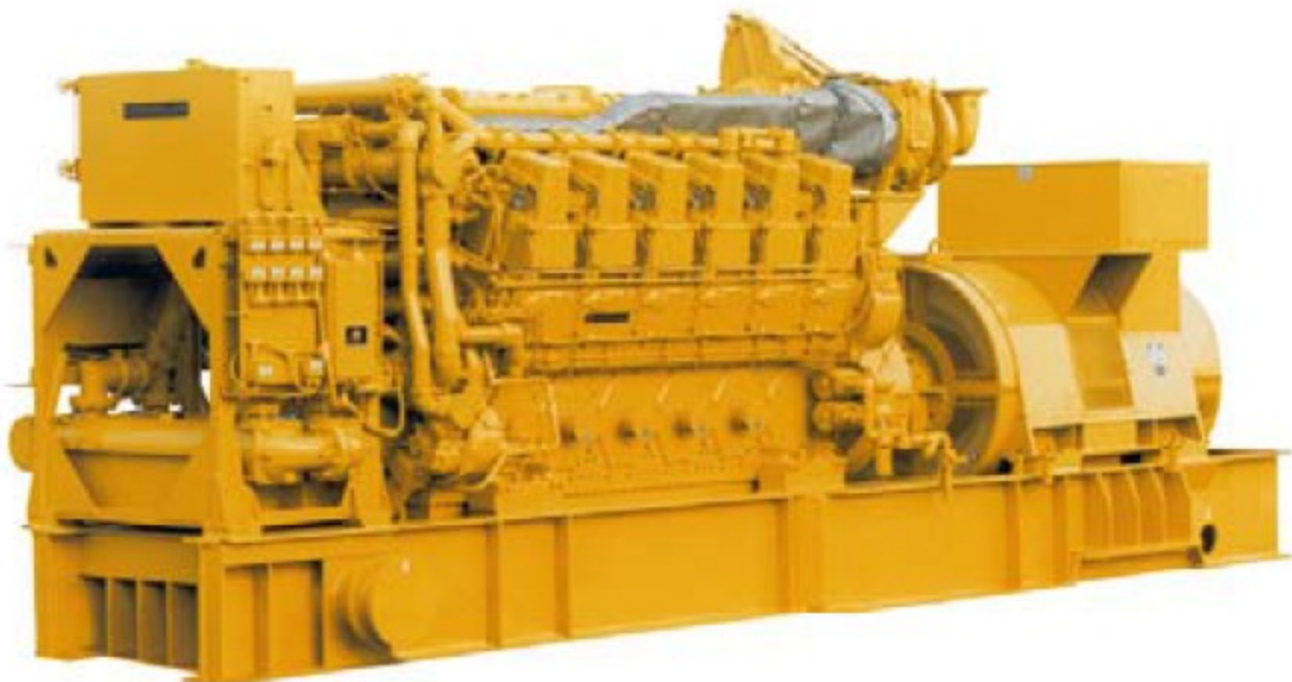


ژنراتور : Caterpillar

موتور دیزل : Caterpillar

Standby		Prime		دیزل ژنراتور
KVA	KW	KVA	KW	
5375	4300	4886	3910	



موتور دیزل		
Manufacturer	Caterpillar	تولید کننده
Model	3612	مدل
Number of cylinders	12	تعداد سیلندر ها
Cylinder arrangement	vertical	آرایش سیلندر ها
Displacement , Liters	18.5	جا به جایی
Bore × Stroke , mm	280× 300	قطر سیلندر × کورس پیستون
Compression Ratio	13:1	نسبت تراکم
Aspiration	Turbocharged Aftercooled	سیستم تنفس
Gross engine power, kWb	3910	قدرت نافالص موتور
Fan Power, kWm	4000	قدرت فن
Combustion air flow, m ³ /min	392.4	جریان هوای احتراق
Exhaust gas temp.(after turbo) , °C	452.8 °	دمای گاز خروجی از اگزوز
Exhaust gas flow (after turbo) , m ³ /min	1936.4	جریان هوای خروجی از اگزوز

ژنراتور

Manufacturer	Caterpillar	تولید کننده
Standby power at rated voltage ,KVA	5375	توان standby در ولتاژ نامی
Efficiency, %	89.5	راندمان
Power factor	0.8	ضریب قدرت
Phase	3	فاز
Frequency, Hz	50	فرکانس
Speed, Rpm	1000	سرعت
Voltage, V	380	ولتاژ
Excitation	Permanent Magnet	سیستم تمریک
Voltage Regulator	Three phase sensing	رگولاتور ولتاژ
Voltage Regulation, %	Less than +/- 1/2%	تنظیم ولتاژ
Over speed, Rpm	2250	مداکثر سرعت مجاز
Insulation class	H	کلاس عایق
Connection	Terminal strip connection	اتصال
Protection class	IP23	کلاس حفاظتی

DIESEL GENERATOR SET

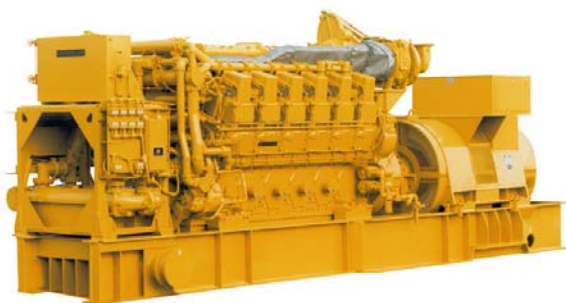


Image shown may not reflect actual package

STANDBY **4300 ekW 5375 kVA** **50 Hz 1000 rpm**

Caterpillar is leading the power generation Market place with Power Solutions engineered to deliver unmatched flexibility, expandability, reliability, and cost-effectiveness.

FEATURES

FUEL/EMISSIONS STRATEGY

- Low BSFC

FULL RANGE OF ATTACHMENTS

- Wide range of bolt-on system expansion attachments, factory designed and tested
- Flexible packaging options for easy and cost effective installation

SINGLE-SOURCE SUPPLIER

- Fully prototype tested with certified torsional vibration analysis available

WORLDWIDE PRODUCT SUPPORT

- Cat® dealers provide extensive post sale support including maintenance and repair agreements
- Cat dealers have over 1,800 dealer branch stores operating in 200 countries.
- The Cat S•O•SSM program effectively detects internal engine component condition, even the presence of unwanted fluids and combustion by products.

3612 DIESEL ENGINE

- Reliable, rugged, durable design
- Four-stroke diesel engine combines consistent performance and excellent fuel economy with minimum weight

CAT® GENERATOR

- Matched to the performance and output characteristics of Cat engines

CAT GENERATOR SET MONITORING SYSTEM (GSM)

- Simple user friendly interface and navigation
- Provides protection, monitoring, and control of the diesel generator set.
- Redundant shutdown protection

STANDBY 4300 ekW 5375 kVA

50 Hz 1000 rpm



FACTORY INSTALLED STANDARD & OPTIONAL EQUIPMENT

System	Standard	Optional
Air Inlet	<ul style="list-style-type: none">• Aftercooler, fresh water, corrosion resistant coated (air side)• Air inlet shutoff• Air Cleaner• Breather, crankcase, top-mounted• Turbocharger, watercooled, engine oil lubricated	<ul style="list-style-type: none"><input type="checkbox"/> Soot Filter<input type="checkbox"/> Air cleaner Louver Assembly<input type="checkbox"/> Vertical Support Bracket<input type="checkbox"/> Heavy Duty Air Cleaner<input type="checkbox"/> Air Inlet Adapter<input type="checkbox"/> Boost Control Valve
Cooling	<ul style="list-style-type: none">• Engine coolant water drains• Front Mounted Turbos• Three-bundle oil cooler.• Water Temperature Regulator• Jacket Water Thermostats	<ul style="list-style-type: none"><input type="checkbox"/> Heat Exchanger for single circuit<input type="checkbox"/> Heating Aids<input type="checkbox"/> Cooling System Aids<input type="checkbox"/> Auxiliary Water Pump<input type="checkbox"/> Expansion Tank
Exhaust	<ul style="list-style-type: none">• 457 mm (18 in) Cat bolt pattern• Dry, gas tight, exhaust manifold• Includes adapter, flexible exhaust fitting	<ul style="list-style-type: none"><input type="checkbox"/> Flexible Exhaust Fittings<input type="checkbox"/> Weld Flange and Related Hardware
Fuel	<ul style="list-style-type: none">• Simplex or Duplex	<ul style="list-style-type: none"><input type="checkbox"/> Fuel Priming Pump<input type="checkbox"/> Duplex Primary Fuel Strainer<input type="checkbox"/> Fuel System Connections
Generator	<ul style="list-style-type: none">• Custom Generator Per Generator Data Sheet Completed by Dealer	<ul style="list-style-type: none"><input type="checkbox"/> 3 Phase, six leads, WYE<input type="checkbox"/> Class F insulation<input type="checkbox"/> Bus bar connections<input type="checkbox"/> Winding temperature detectors<input type="checkbox"/> Anti-condensation space heaters
Governor	<ul style="list-style-type: none">• UG Actuator	<ul style="list-style-type: none"><input type="checkbox"/> Electronic/ Actuators<input type="checkbox"/> Digital Programmers<input type="checkbox"/> Battery Backup/Power Supply<input type="checkbox"/> 230 UA<input type="checkbox"/> 723 Plus<input type="checkbox"/> EGB Actuator
Lube	<ul style="list-style-type: none">• Centrifugal oil filters with single shutoff• Service side engine mounted on cylinder block inspection covers• Wet oil sump. Includes engine-driven main lubrication pump, installed oil lines, engine-driven oil pump and oil pan.• Oil filler and dipstick• Valve, oil pressure regulating• Valves, crankcase explosion relief	<ul style="list-style-type: none"><input type="checkbox"/> Oil Pan Drain valve<input type="checkbox"/> Lube ANSI adapter (Emergency Connection)
Mounting	<ul style="list-style-type: none">• Damper, torsional vibration• Engine and Generator Mounting	<ul style="list-style-type: none"><input type="checkbox"/> Isolator<input type="checkbox"/> Spring type vibration isolator<input type="checkbox"/> Vertically Restrained<input type="checkbox"/> Non-vertically Restrained
Starting / Charging	<ul style="list-style-type: none">• Vane type air starter• Two motors, engine mounted at rear, on left side• Includes air silencer• Line Group for Single Point Custom Connection	<ul style="list-style-type: none"><input type="checkbox"/> Pressure Reducing Valve<input type="checkbox"/> Compressed Air Flex Hose<input type="checkbox"/> Turbine Type Air Starters<input type="checkbox"/> Redundant Air Starters
General	<ul style="list-style-type: none">• Paint, Caterpillar yellow• Pumps, gear driven: fuel, oil, jacket water, aftercooler/oil cooler water	<ul style="list-style-type: none"><input type="checkbox"/> Custom Paint Colors

www.matin-energy.ir

SPECIFICATIONS

CAT GENERATOR

ExcitationPermanent Magnet
Pitch.....Optimum
Number of poles.....6
Number of bearingsTwo Bearing
InsulationNormal Class F or H
IP ratingDrip proof IP23
Over speed capability - % of rated.....125%
Wave form deviation.....3 %
Voltage regulator..... 3 phase sensing with load
adjustable module

CAT DIESEL ENGINE

3612, V-12, 4 stroke, water-cooled diesel

Bore280 mm 11.0 in)
Stroke300 mm (11.8 in)
Displacement per cylinder.....18.5L (1127 in³)
Total Displacement.....222L (13,524 in³)
Compression ratio.....13:1
Aspiration.....TA
Fuel system.....Direct Unit Injection

Generator Set Monitoring System (GMS)

Features:

- 10 inch (254 mm) color monitor to display all engine parameters and alarm annunciation
- Annunciation of all engine shutdowns, alarms, and status points
- Start/prelube control switch, fuel control switch and emergency stop buttons
- Speed control switch with automatic changing to ball head control when a governor failure occurs, if ball head control is available. Contacts are available for customer use.
- Selection of local/remote control of engine
- Selection of idle/rated control of engine.
- Equipped for remote communication
- Four 4-20mA outputs (programmable)
- Relay contract signals to the remote monitoring system (summary shutdown, summary alarm, local operation/remote, engine running, PLC failure, fuel control and idle/rated).

TECHNICAL DATA

Open Generator Set - 1000 rpm/50 Hz	NOTES	STANDBY DM5411-06
<u>RATING</u> Engine Power Generator Power Engine efficiency (ISO 3046/1) Engine efficiency (nominal)	(2) (2) (1) (1)	4480 bkW 4300 ekW 42.4 % 41.1 %
<u>ENGINE DATA</u> Fuel Consumption (ISO3046/1) Fuel Consumption (nominal) Fuel Consumption (90% confidence) Air Flow (@ 25°C, 101.3 kPaa) Air Mass Flow Compressor Outlet Pressure Compressor Outlet Temperature Inlet manifold Pressure Inlet Manifold Temperature Timing Exhaust Stack Temperature Exhaust Gas Flow (@stack temp, 101.3kPa) Exhaust Gas Mass Flow	(1) (1) (1) (10) 	196.2 g/bkW-hr 200.0 g/bkW-hr 202.1 g/bkW-hr 392.4 m3/min 26264 kg/hr 261.1 kPa(abs) 198.2 °C 258.1 kPa(abs) 68.4 °C 22.5 °BTDC 452.8 °C 1936.4 m3/min 27180 kg/hr
<u>ENERGY BALANCE DATA (nominal)</u> Fuel Input Energy (LHV) Heat Rej. To jacket water Heat Rej. To atmosphere Heat Rej. To oil cooler Heat Rej. To EXH. (LHV to 25°C) Heat Rej. To EXH. (LHV to 177°C) Heat Rej. To aftercooler	(1) (4) (5) (6) (4) (4) (7), (8)	10892 KW 875 KW 218 KW 449 KW 3691 KW 2034 KW 1148 KW
<u>EMISSIONS</u> NO _x (as NO) CO THC (molecular weight of 13.018) Particulates	(9) (3) (3) (9)	19.0 g/bkW-hr 0.9 g/bkW-hr 1.2 g/bkW-hr 0.4 g/bkW-hr

CONDITIONS AND DEFINITIONS

ENGINE RATING OBTAINED AND PRESENTED IN ACCORDANCE WITH ISO 3046/1 AND SAE J1995 JAN90 STANDARD REFERENCE CONDITIONS
OF 25°C, 100 KPA, 30% RELATIVE HUMIDITY AND 150M ALTITUDE AT THE STATED AFTERCOOLER WATER TEMPERATURE.
CONSULT ALTITUDE CURVES FOR APPLICATIONS ABOVE MAXIMUM RATED ALTITUDE AND/OR TEMPERATURE.
PERFORMANCE AND FUEL CONSUMPTION ARE BASED ON 35 API, 16°C FUEL HAVING A LOWER HEATING VALUE OF 42.780 KJ/KG
USED AT 29°C WITH A DENSITY OF 838.9 G/LITER.

NOTES

- 1) FUEL CONSUMPTION TOLERANCE. ISO 3046/1 IS 0, + 5% OF FULL LOAD DATA. NOMINAL IS ± 3 % OF FULL LOAD DATA.
- 2) ENGINE POWER TOLERANCE IS ± 3 % OF FULL LOAD DATA.
- 3) EMISSION DATA SHOWN ARE NOT TO EXCEED VALUES.
- 4) HEAT REJECTION TO JACKET AND EXHAUST TOLERANCE IS ± 10% OF FULL LOAD DATA. (heat rate based on treated water)
- 5) HEAT REJECTION TO ATMOSPHERE TOLERANCE IS ±50% OF FULL LOAD DATA. (heat rate based on treated water)
- 6) HEAT REJECTION TO LUBE OIL TOLERANCE IS ± 20% OF FULL LOAD DATA. (heat rate based on treated water)
- 7) HEAT REJECTION TO AFTERCOOLER TOLERANCE IS ± 5% OF FULL LOAD DATA. (heat rate based on treated water)
- 8) TOTAL AFTERCOOLER HEAT = AFTERCOOLER HEAT x ACHRF (heat rate based on treated water)
- 9) EMISSION DATA SHOWN ARE DRY AND NOMINAL VALUES.
- 10) TIMING BASED ON AFM INJECTORS.

STANDBY 4300 ekW 5375 kVA

50 Hz 1000 rpm



RATING DEFINITIONS AND CONDITIONS

Meets or Exceeds International Specifications:

AS1359, CSA, IEC60034-1, ISO3046, ISO8528, NEMA MG 1-22, NEMA MG 1-33, UL508A, 72/23/EEC, 98/37/EC, 2004/108/EC

Standby - Output available with varying load for the duration of the interruption of the normal source power. Average power output is 70% of the standby power rating. Typical operation is 200 hours per year, with maximum expected usage of 500 hours per year. Standby power in accordance with ISO8528. Fuel stop power in accordance with ISO3046.

Ratings are based on SAE J1349 standard conditions.

These ratings also apply at ISO3046 standard conditions

Fuel Rates are based on fuel oil of 35° API [16° C (60° F)] gravity having an LHV of 42 780 kJ/kg (18,390 Btu/lb) when used at 29° C (85° F) and weighing 838.9 g/liter (7.001 lbs/U.S. gal.). Additional ratings may be available for specific customer requirements, contact your Caterpillar representative for details. For information regarding Low Sulfur fuel and Biodiesel capability, please consult your Cat dealer.

STANDBY 4300 ekW 5375 kVA

50 Hz 1000 rpm



DIMENSIONS

Package Dimensions		
Length	10261.7 mm	404.00 in
Width	2530.3.1 mm	99.62 in
Height	3977.7 mm	156.60 in
Weight	51,230 kg	112,690 lb

NOTE: For reference only - do not use for installation design. Please contact your local dealer for exact weight and dimensions. (General Dimension Drawing #2354250).

Performance No.: DM5411 06

Feature Code: 616DE04

Sourced: U.S. Sourced

LEHE0350-01 (03-12)

www.Cat-ElectricPower.com

©2012 Caterpillar
All rights reserved.

Materials and specifications are subject to change without notice. The International System of Units (SI) is used in this publication.

CAT, CATERPILLAR, their respective logos, "Caterpillar Yellow," the "Power Edge" trade dress as well as corporate and product identity used herein, are trademarks of Caterpillar and may not be used without permission.